

# EVERICK FOUNDATION



## Bring Archaeology into the Classroom

### WHAT WE OFFER

Everick Principal Research Archaeologist, Dr Serena Love has a passion for archaeology and ample field experience from across the world, including the United States, Scotland, Israel, Egypt, Turkey, Iraq and throughout Queensland.

Everick Foundation is a charitable endeavour that provides opportunities for outreach and education in the topics of archaeology. We love to come to schools and connect with students. Classrooms should be encouraged to be curious, driven to see how they fit into the broader continuum of time, and inspired to explore what their archaeological footprint could be!

We also provide teachers with the chance to gain confidence in teaching archaeology by providing an annual, locally held, field school, in addition to various PD sessions.

Our range of services include:

- ♦ Classroom visits
- ♦ Mini-excavations
- ♦ Garbology
- ♦ Mock excavation
- ♦ PD sessions

### LEARNING OUTCOMES

Everick Foundation wants our contribution to your classroom to be valuable and worthwhile. Our services target the following learning outcomes.

- ♦ Develop critical thinking skills;
- ♦ Encourage students to practice writing skills, collaborative problem solving, and group work;
- ♦ Synthesise sources of information on different scales;
- ♦ Illustrate what archaeology can tell us about the lives of people from the past; and
- ♦ Examine the attitudes, beliefs and customs of different cultures.

Our fun and interactive presentations help students better engage with the content they are studying.

Sessions are, at minimum, 45-60 minutes and cost \$150 AUD per hour, in addition to \$100 AUD per hour for travel related experiences.

### CONTACT

Dr Serena Love (Principal Research Archaeologist)

Email: [s.love@everick.net.au](mailto:s.love@everick.net.au)

# EVERICK FOUNDATION



## Bring Archaeology into the Classroom

### CLASSROOM VISITS

Everick Foundation can bring archaeology to the classroom! We offer a range of in-class presentations that can be delivered in person or via video conferencing.

We work directly with teachers to present a variety of topics, which can be aligned to suit cross-curriculum priorities in History and Science units within **Queensland Curriculum and Assessment Authority (QCAA)** syllabi.

Our topics include:

- ◆ **What is archaeology?**
- ◆ **Aboriginal Australia - Lake Mungo**
- ◆ **The ethics of human remains**
- ◆ **Museum repatriation**
- ◆ **Technology in archaeology**
- ◆ **Science in Archaeology** –Biology, Chemistry, Earth Sciences and Physics
- ◆ **Senior QCAA Ancient History topics such as Digging up the Past and Personalities in Their Time** (e.g. Hatshepsut, Akhenaten).

### GARBOLOGY

Archaeology is sometimes called '**the science of rubbish**' - what does your garbage say about you?

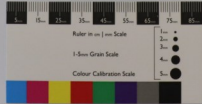
Everick Foundation will come to your school and provide bags of modern-day garbage that have been sorted into specific household scenarios (e.g. share house, family with children, household with pets). We then let the students engage with materials we would otherwise not give a second thought to when we throw them away. What can we infer about the occupants from the rubbish they discard?

The exercise focusses on **stratigraphy**, **absolute and relative dating** techniques, and primary-secondary **source analysis**. These bags of garbage are micro-sites that require the same investigative and analytical skills one would need on a real excavation.

This exercise helps dispel the notion that archaeology is a discipline that focuses solely on the 'ancient past'. Archaeology is all around us!



# EVERICK FOUNDATION



## Bring Archaeology into the Classroom

### MINI-EXCAVATIONS

Do you want your students to have some hands-on experience with material culture?

Everick Foundation can conduct our **portable mini excavations** at your school and everyone can become an archaeologist for a day!

With our mini-excavations we bring the archaeological site to you and your students can excavate part of a fictitious site, **Companion's Nest** - a local boarding house used in the 19th century to help immigrants find their feet in Australia.

This activity takes the class on a compressed archaeological journey, including the formulation of **research questions** to **excavation**, **artefact analysis** and **interpretation**.

We encourage the students to think about the materials they find and to theorise about how they could have become archaeological remains.

What does material culture say about the people who once occupied a site? What can we infer about the **demographics**, their **diet**, **occupation** and **socio-economic standing**?

### TARDIS

Does your class want to dig up the past, not just for the day but the whole term? Everick Foundation is proud to introduce the TARDIS – **Teaching Archaeological Research Design in Simulation**.

We can create a custom design suitable for the available space and budget. The content of the excavation is tailored to the teaching curriculum and can accommodate multiple years with different themes. Each layer is filled with intriguing artefacts (e.g. charcoal, bone, stone tools, buttons, ceramics, glass, clay figurines, amulets) for students to uncover!

The TARDIS experience covers a range of archaeological activities including research design, excavation, sieving, site and artefact recording, post excavation analysis and interpretation.

This opportunity allows you students to truly understand the totality of the archaeological process.

# EVERICK FOUNDATION



## Bring Archaeology into the Classroom

### FIELD SCHOOL

Join us on a real excavation! This opportunity is for teachers who are after some hands on experience in the field.

We are in the process of organising our 2021 field school, which be located in the South East Queensland region, during the September school holidays.

The field school has been designed to complement core state and national history and science curriculum components and provide you with valuable practical tools that can be transferred into the classroom.

Site activities will include:

- ♦ **Mapping techniques** - including traverses, control points and staking out the boundaries of an archaeological excavation.
- ♦ **Technology**- Total station and GPS
- ♦ **Excavation** - hand held excavation
- ♦ **Recording** - site recording and sketching
- ♦ **Artefact sieving and analysis**

### PD SESSIONS

Want to gain more knowledge about archaeology to enhance your confidence when teaching the topic in the classroom?

Everick Foundation provides workshops that are compliant with the **Australian Professional Standards for Teachers (APST)** and the **Queensland College of Teachers (QCT) Continuing Professional Development (CPD)** framework.

Upon completion of Everick Foundation workshops, all participants will receive a certificate of completion.

Topics include:

- ♦ **What is archaeology?**
- ♦ **Aboriginal Australia** - Lake Mungo
- ♦ **The ethics of human remains**
- ♦ **Museum repatriation**
- ♦ **Technology in archaeology**
- ♦ **Science in Archaeology**
- ♦ **Ancient Egypt** (Senior QCAA Ancient History)